



**Garden City Homes**

# Tintern

**2 Bedroom Apartment**



## Specification

### Kitchen

- Contemporary high-quality kitchen
- Fridge freezer
- Single electric oven
- Stainless steel electric hob
- Stainless steel splashback
- Cooker hood
- Pre-plumbed for washer/dryer and dishwasher
- Stainless steel sink and chrome mixer tap

### Safety

- High security front door
- Mains powered smoke detectors
- NHBC 10-year build warranty

### Bathroom

- Contemporary sanitary ware
- Bath shower mixer
- Part tiled walls

### Electrical

- Electric Vehicle Charging point
- Burglar Alarm
- External light fittings
- White light switches and sockets throughout
- TV and telephone point to lounge
- Recessed spotlights and feature chrome light fitting to Kitchen area
- Recessed spotlights in Bathroom

### General

- Door entry system
- Chrome ironmongery
- UPVC double glazed windows
- One allocated parking space



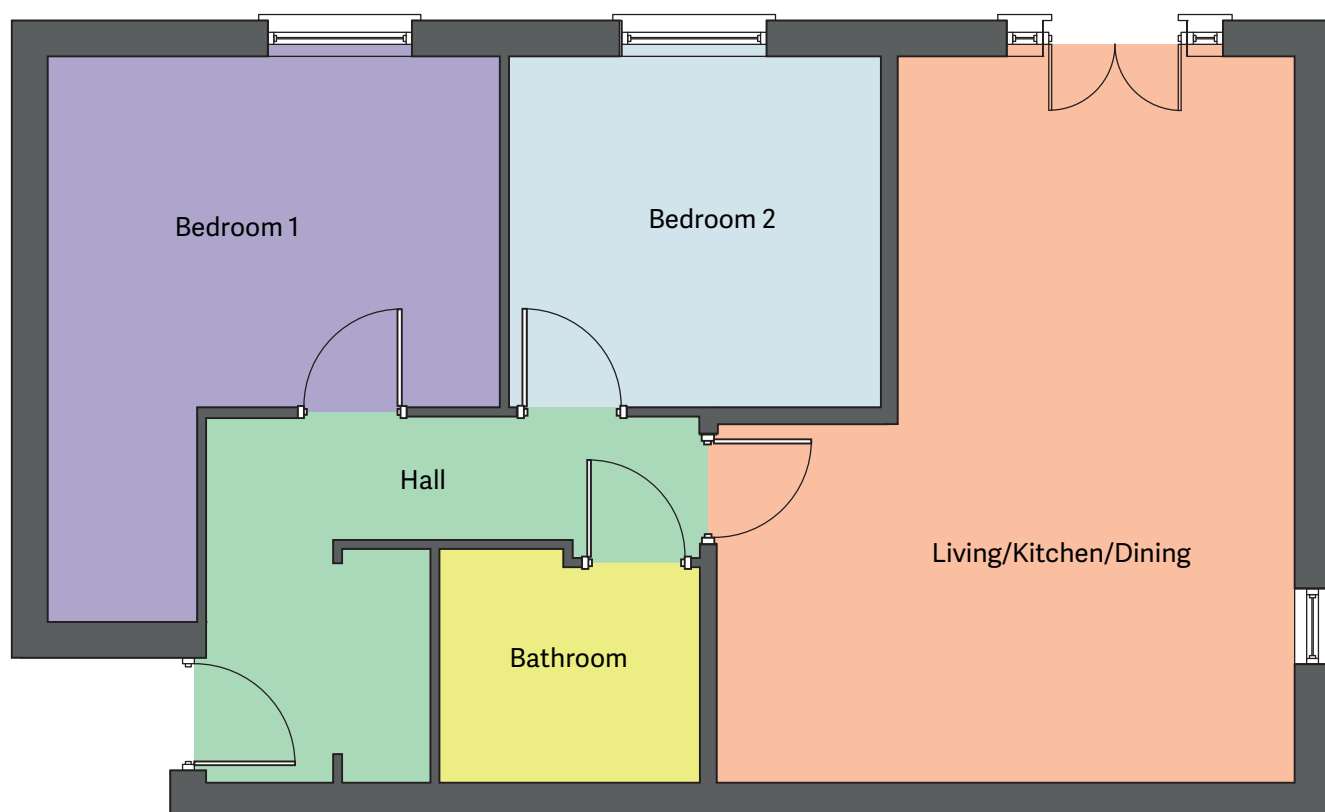


Garden City Homes

# Tintern

2 Bedroom Apartment

## Floor plan



## Dimensions

Living/Kitchen/Dining	6.00 x 4.76m
Bedroom 1	4.66 x 3.74m
Bedroom 2	2.90 x 3.09m
Bathroom	1.57 x 2.16m

**Disclaimer:** Please note illustration is an example of the house type only. All dimensions indicated are anticipated measurements provided by the developer and are not confirmed as built dimensions. Furniture layout is for illustrative purposes only. Materials used, branded items, landscaping and parking arrangements may differ from that shown. For detailed plans and specifications please contact our Sales Advisors.

