



Garden City Homes

Rushton

2 Bedroom Terrace



Specification

Kitchen

- Contemporary high-quality kitchen
- Integrated fridge freezer
- Stainless steel single fan oven
- Stainless steel hob
- Stainless steel splashback
- Stainless steel extractor hood
- Pre-plumbed for washer/dryer
- Stainless steel sink and chrome mixer tap
- Flooring provided

Safety

- High security front door
- Mains powered smoke detectors
- Mains powered heat detectors
- Carbon monoxide detector
- Ventilation system
- NHBC 10-year build warranty

Bathroom

- Contemporary sanitary ware
- Thermostatic over bath shower
- Bath shower screen
- Full height ceramic tiles around bath
- Flooring provided

Electrical

- Electric Vehicle Charging point
- Pre-wired multimedia point
- White light switches and sockets throughout
- External sensor light fittings

General

- Chrome ironmongery
- Turfed rear garden
- UPVC double glazed windows



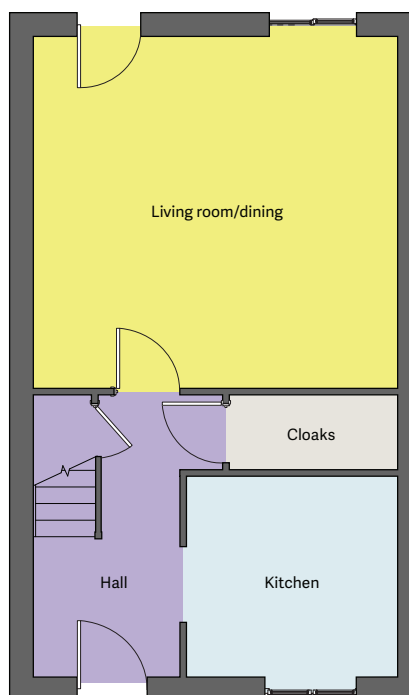


Garden City Homes

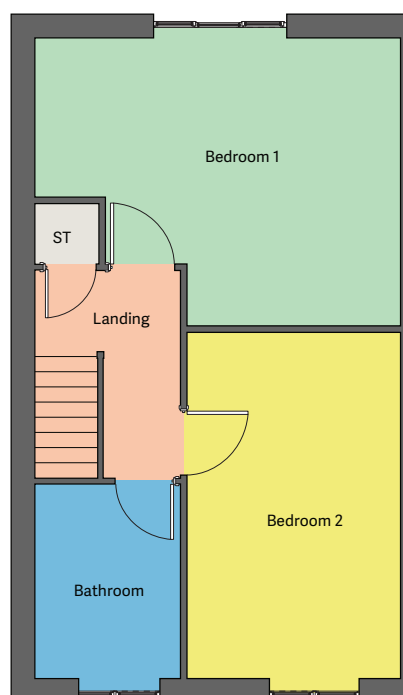
Rushton

2 Bedroom Terrace

Floor plan



Ground floor



First floor

Dimensions

Kitchen	2.88 x 2.73m
Living room/Dining	4.95 x 4.78m
Cloaks	2.29 x 1.02m
Bedroom 1	4.95 x 3.88m
Bedroom 2	4.73 x 2.89m
Bathroom	1.97 x 1.71m

Disclaimer: Please note illustration is an example of the house type only. All dimensions indicated are anticipated measurements provided by the developer and are not confirmed as built dimensions. Furniture layout is for illustrative purposes only. Materials used, branded items, landscaping and parking arrangements may differ from that shown. For detailed plans and specifications please contact our Sales Advisors.





Garden City Homes

Westlow

3 Bedroom Terrace



Specification

Kitchen

- Contemporary high-quality kitchen
- Integrated fridge freezer
- Stainless steel single fan oven
- Stainless steel hob
- Stainless steel splashback
- Stainless steel extractor hood
- Pre-plumbed for washer/dryer
- Stainless steel sink and chrome mixer tap
- Flooring provided

Safety

- High security front door
- Mains powered smoke detectors
- Mains powered heat detectors
- Carbon monoxide detector
- Ventilation system
- NHBC 10-year build warranty

Bathroom

- Contemporary sanitary ware
- Thermostatic over bath shower
- Bath shower screen
- Full height ceramic tiles around bath
- Flooring provided

Electrical

- Electric Vehicle Charging point
- Pre-wired multimedia point
- White light switches and sockets throughout
- External sensor light fittings

General

- Chrome ironmongery
- Turfed rear garden
- UPVC double glazed windows



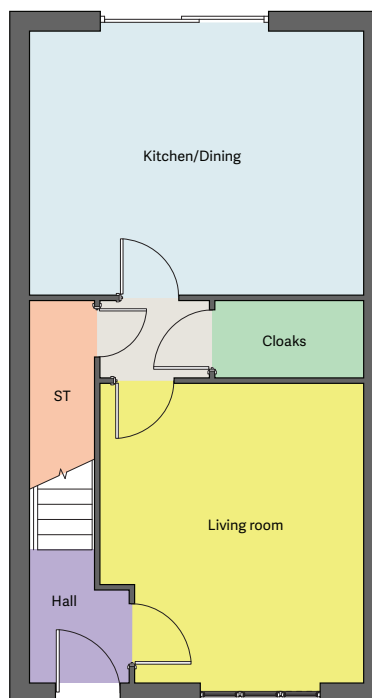


Garden City Homes

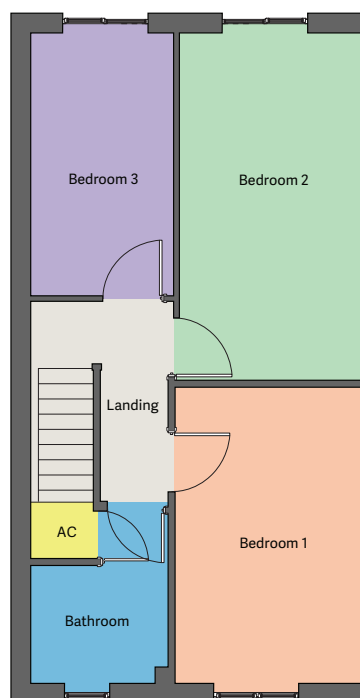
Westlow

3 Bedroom Terrace

Floor plan



Ground floor



First floor

Dimensions

Kitchen/Dining	4.91 x 3.86m
Living room	4.41 x 3.89m
Cloaks	2.22 x 1.14m
Bedroom 1	4.79 x 2.81m
Bedroom 2	5.12 x 2.73m
Bedroom 3	3.86 x 2.09m
Bathroom	2.59 x 2.02m

Disclaimer: Please note illustration is an example of the house type only. All dimensions indicated are anticipated measurements provided by the developer and are not confirmed as built dimensions. Furniture layout is for illustrative purposes only. Materials used, branded items, landscaping and parking arrangements may differ from that shown. For detailed plans and specifications please contact our Sales Advisors.

