



Garden City Homes

Turing

3 Bedroom House



Specification

Kitchen

- Contemporary high-quality kitchen
- Zanussi brushed stainless steel single oven
- Zanussi brushed stainless steel electric hob
- Stainless steel splashback
- Zanussi chimney style stainless steel extractor
- Pre-plumbed for washer/dryer and dishwasher
- Stainless steel sink and chrome mixer tap

Safety

- High security front door and rear patio doors
- Mains powered smoke detectors
- Mains powered heat detectors
- Carbon monoxide detector
- NHBC 10-year build warranty

Bathroom

- Contemporary sanitary ware
- Bath in main bathroom
- Part tiled ceramic walls

Electrical

- Electric Vehicle Charging point
- Pre-wired multimedia point
- BT point to lounge
- TV point to lounge and bedroom with installed aerial and signal certificate
- White light switches and sockets throughout
- Feature chrome light fitting to Kitchen area
- Ceiling mounted bathroom light fitting

General

- External light fittings
- Doorbell and chime unit
- Chrome ironmongery
- Turfed rear garden
- Upvc double glazed windows
- Paved patio area to rear
- Tarmac driveways plot dependent

En-Suite

- Contemporary sanitary ware
- Chrome brassware and Mira electric shower

This house type is a terrace or semi detached depending on plot, please check the site plan and discuss with Sales Advisor for confirmation.

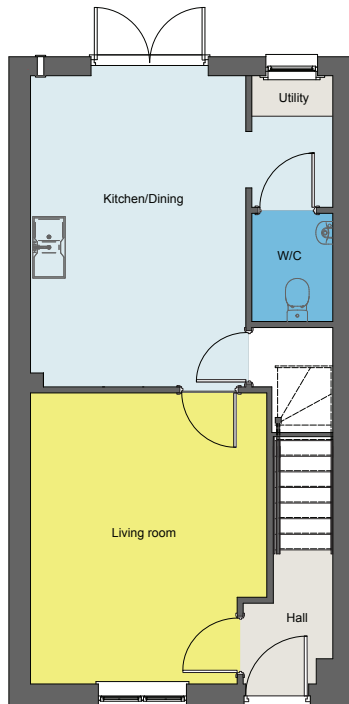


Garden City Homes

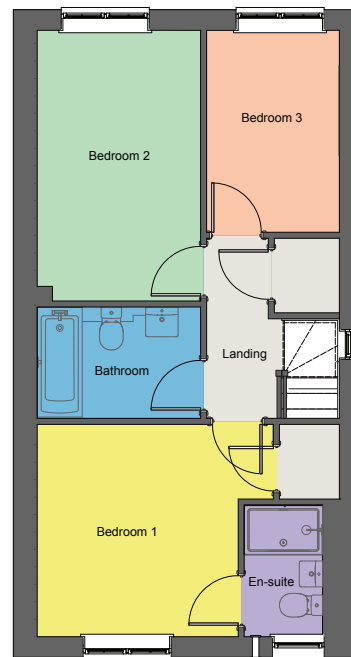
Turing

3 Bedroom House

Floor plan



Ground floor



First floor

Dimensions

Living Room	4.53m x 3.7m
Kitchen/Dining	4.76m x 3.37m
WC	1.7m x 1.3m
Bedroom 1	3.17m x 3.76m
En-suite	2.07m x 1.51m
Bedroom 2	4.22m x 2.57m
Bedroom 3	3.16m x 2.09m
Bathroom	1.75m x 2.57m

Disclaimer: Please note illustration is an example of the house type only. All dimensions indicated are anticipated measurements provided by the developer and are not confirmed as built dimensions. Furniture layout is for illustrative purposes only. Materials used, branded items, landscaping and parking arrangements may differ from that shown. For detailed plans and specifications please contact our Sales Advisors.

