



Garden City Homes

# The Salter

2 Bedroom Semi Detached



## Specification

### Kitchen

- Contemporary high-quality kitchen
- Brushed stainless steel multi-function single oven
- Brushed stainless steel gas hob
- Glass splash back
- Brushed steel extractor fan
- Pre-plumbed for washer/dryer
- Stainless steel sink and chrome mixer tap
- Flooring provided

### Safety

- High security front door and rear patio doors
- Mains powered smoke detectors
- Mains powered heat detectors
- Carbon monoxide detector
- Ventilation system
- NHBC 10-year build warranty

### Bathroom

- Contemporary sanitary ware
- Mira thermostatic over bath shower in main bathroom
- Bath shower screen
- Part tiled ceramic walls
- Flooring provided

### Electrical

- Electric Vehicle Charging point
- Pre-wired multimedia point
- BT point to lounge
- TV point to lounge and main bedroom
- White light switches and sockets throughout
- Feature chrome light fitting to Kitchen area
- Bathroom light fitting

### General

- External light fittings
- Chrome ironmongery
- Turfed rear garden
- UPVC double glazed windows
- Paved patio area to rear
- Tarmac driveway plot dependent



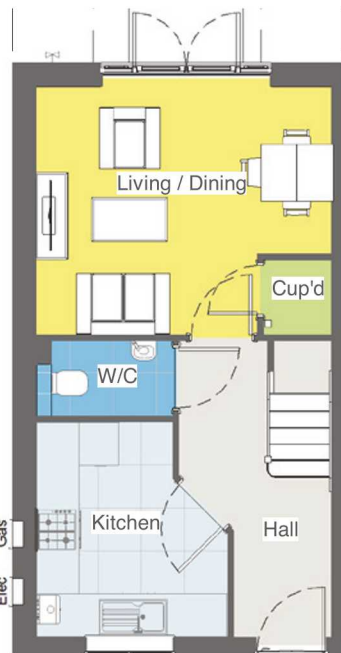


Garden City Homes

# The Salter

2 Bedroom Semi Detached

## Floor plan



Ground floor



First floor

## Dimensions

Living Room	3.11m x 3.49m
Kitchen	2.7m x 3.03m
WC	1.94m x 0.9m
Bedroom 1	4.15m x 3.04m
Bedroom 2	4.1m x 2.37m
Bathroom	2.17m x 2.02m

**Disclaimer:** Please note illustration is an example of the house type only. All dimensions indicated are anticipated measures provided by the developer and are not confirmed as built dimensions. Furniture layout is for illustrative purposes only. Materials used, landscaping and parking arrangements may differ from that shown. For detailed plans and specifications please contact our Sales Advisors.

