



Garden City Homes

The Naylor

3 Bedroom Semi Detached



Specification

Kitchen

- Contemporary high-quality kitchen
- Brushed stainless steel multi-function single oven
- Brushed stainless steel gas hob
- Glass splash back
- Brushed steel extractor fan
- Pre-plumbed for washer/dryer
- Stainless steel sink and chrome mixer tap
- Flooring provided

Safety

- High security front door and rear patio doors
- Mains powered smoke detectors
- Mains powered heat detectors
- Carbon monoxide detector
- Ventilation system
- NHBC 10-year build warranty

Bathroom

- Contemporary sanitary ware
- Mira thermostatic over bath shower in main bathroom
- Bath shower screen
- Part tiled ceramic walls
- Flooring provided

Electrical

- Electric Vehicle Charging point
- Pre-wired multimedia point
- BT point to lounge
- TV point to lounge and main bedroom
- White light switches and sockets throughout
- Feature chrome light fitting to Kitchen area
- Bathroom light fitting

General

- External light fittings
- Chrome ironmongery
- Turfed rear garden
- UPVC double glazed windows
- Paved patio area to rear
- Tarmac driveway plot dependent



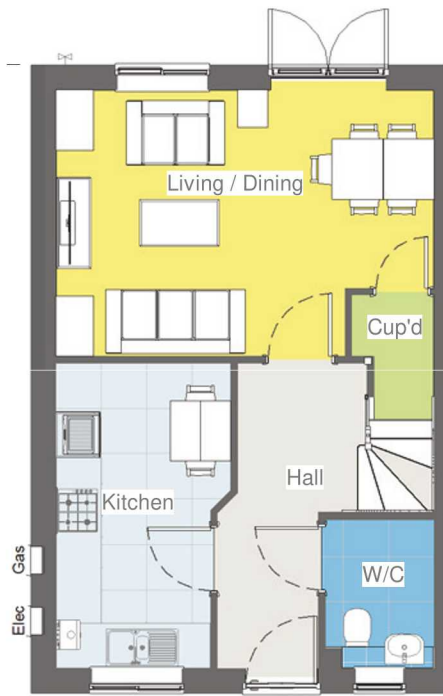


Garden City Homes

The Naylor

3 Bedroom Semi Detached

Floor plan



Ground floor



First floor

Dimensions

Living Room	5.05m x 3.56m
Kitchen	4.08m x 2.35m
WC	1.48m x 2.02m
Bedroom 1	4.35m x 2.79m
Bedroom 2	4.05m x 2.79m
Bedroom 3	2.2m x 2.66m
Bathroom	2.2m x 2.02m

Disclaimer: Please note illustration is an example of the house type only. All dimensions indicated are anticipated measures provided by the developer and are not confirmed as built dimensions. Furniture layout is for illustrative purposes only. Materials used, landscaping and parking arrangements may differ from that shown. For detailed plans and specifications please contact our Sales Advisors.

