

HOLLYHOCK

FLOOR PLAN



THE FAMILY INSPIRED HOLLYHOCK IS A THREE-BEDROOM TERRACED PROPERTY WITH 102.6 M² OF LIVING SPACE OVER THREE FLOORS.

On the ground floor, a separate entrance porch leads to a bright front-aspect living room. Moving towards the back of the house, a hallway leads to a separate washroom (with a toilet, basin and window) and a kitchen-diner. This spacious, open plan area has doors which lead out into the garden.

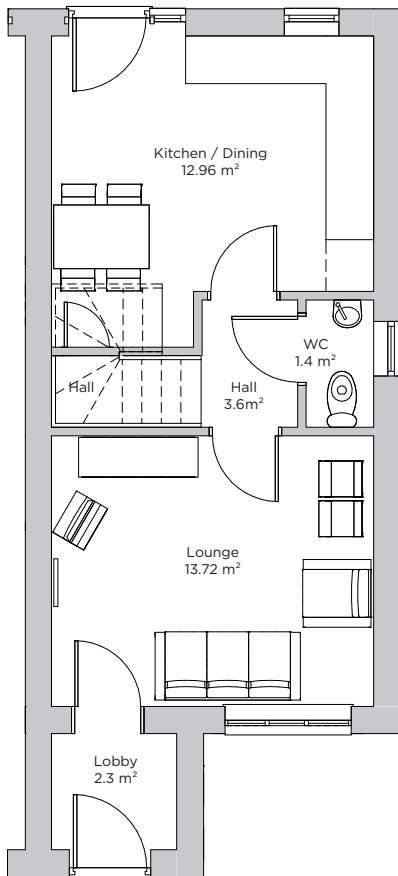
On the first floor, there's a double bedroom at the front as well as a fully-fitted family bathroom and a small 4.5 M² study room. The second floor has a larger double bedroom at the front and a smaller double at the back.

Outside, there are front and back gardens as well as a tarmac driveway and external lighting.

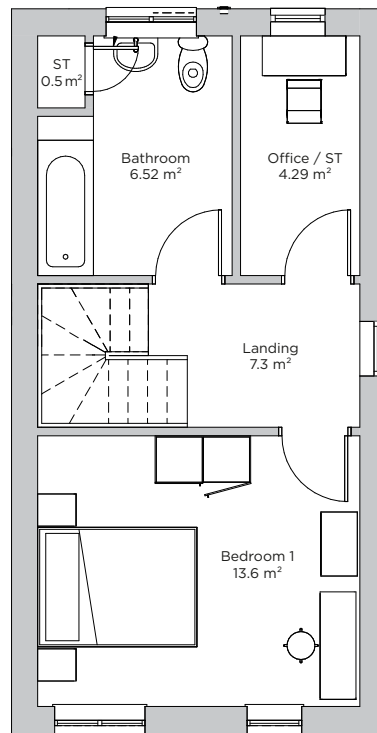
Hollyhock features

- Fully fitted Twyford bathroom
- Separate ground-floor washroom
- Storage cupboard
- Turfed front and back garden
- Tarmac driveway for two cars
- External tap
- External lights
- Fence and gate to back garden
- NHBC home warranty
- Stainless steel single oven
- Electric hob
- Extractor hood
- No slip flooring in kitchen, washroom and bathroom.

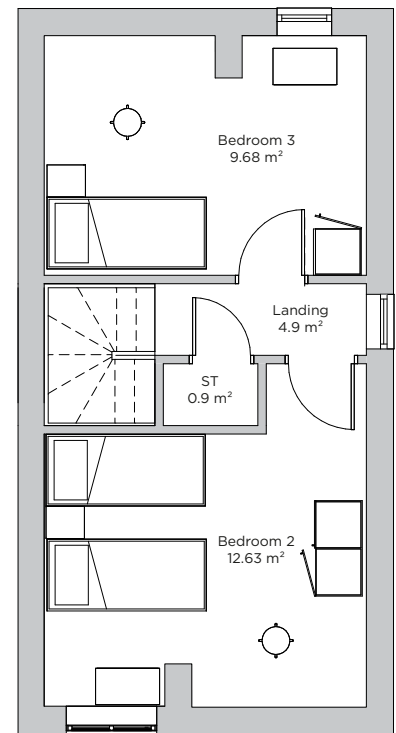
TYPICAL FLOOR PLAN



GROUND FLOOR



FIRST FLOOR



SECOND FLOOR

Please note illustration is an example of the house type only. All dimensions indicated are approximate and may be subject to change. Furniture layout is for illustrative purposes only. Materials used may differ from that shown including render and roof tile colours. For detailed plans and specifications please contact our Sales Advisor.