

# BELFLOWER

## FLOOR PLAN



**THE GENEROUSLY-SIZED BELFLOWER IS A THREE-BEDROOM, SEMI-DETACHED FAMILY PROPERTY COVERING THREE FLOORS AND 102.6 M<sup>2</sup> OF LIVING SPACE.**

On the ground floor, there's a separate entrance porch leading to a bright front-aspect living room. Moving towards the back of the house, a hallway leads to a separate washroom with a toilet and basin, as well as a kitchen-diner. This spacious, open plan area has doors which lead out into the garden.

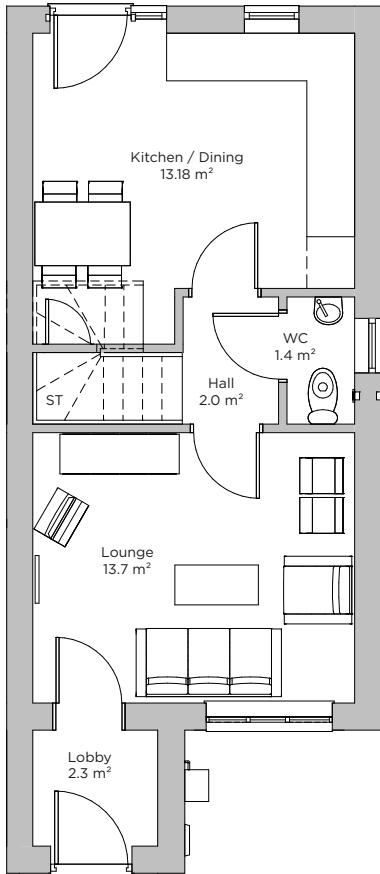
On the first floor, there's a double bedroom at the front as well as a fully-fitted family bathroom and a small 4.5 M<sup>2</sup> study room. The second floor has a larger double bedroom at the front and a smaller double at the back.

Outside, there are front and back gardens as well as a tarmac driveway and external lighting.

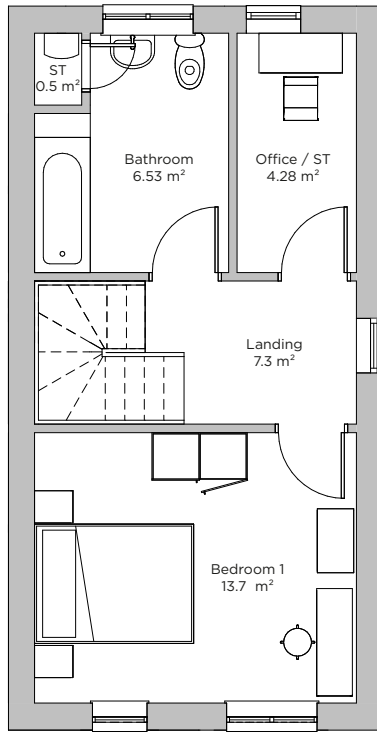
### **Bellflower features**

- Fully fitted Twyford bathroom
- Separate ground-floor washroom
- Storage cupboard
- Turfed front and back garden
- Tarmac driveway for two cars
- External tap
- External lights
- Fence and gate to back garden
- NHBC home warranty
- Stainless steel single oven
- Electric hob
- Extractor hood
- No slip flooring in kitchen, washroom and bathroom.

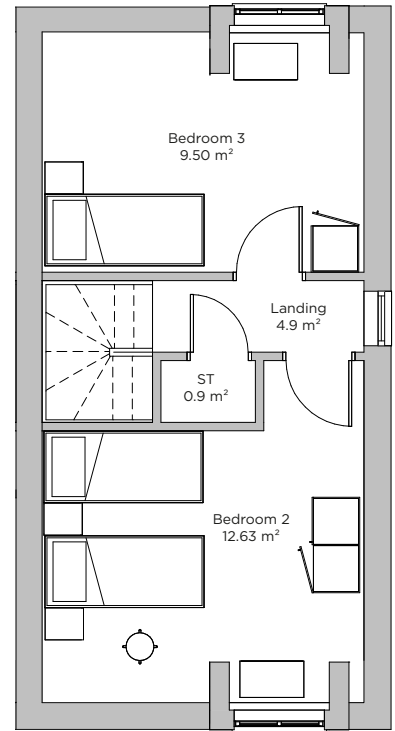
## TYPICAL FLOOR PLAN



**GROUND FLOOR**



**FIRST FLOOR**



**SECOND FLOOR**

Please note illustration is an example of the house type only. All dimensions indicated are approximate and may be subject to change. Furniture layout is for illustrative purposes only. Materials used may differ from that shown including render and roof tile colours. For detailed plans and specifications please contact our Sales Advisor.